

Collection / Management / Analysis of Waveform Data

SANYO MACHINE WORKS, LTD.

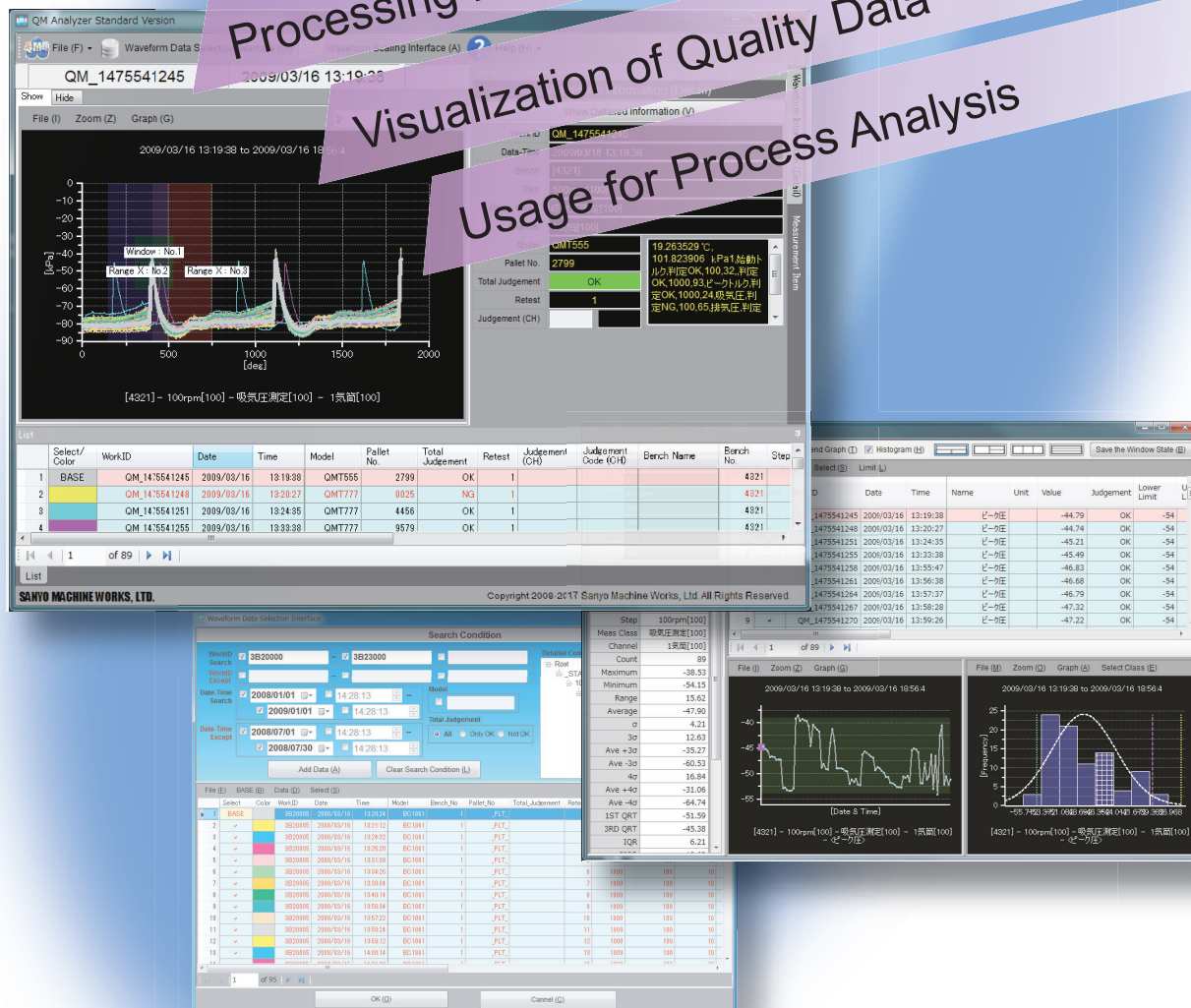
Quality Manager

Quality Manager®

Processing Numerous Waveforms

Visualization of Quality Data

Usage for Process Analysis

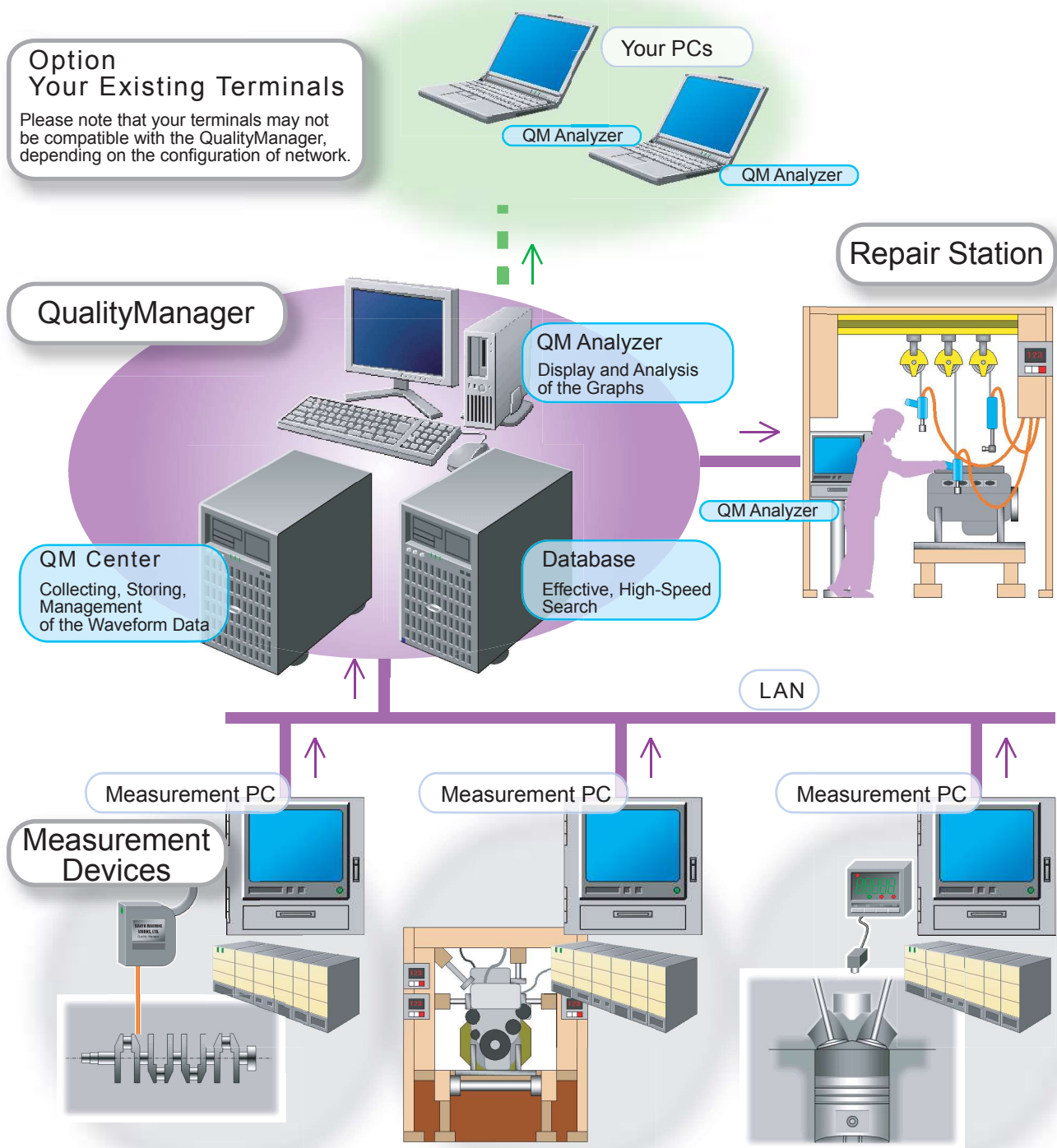


SANYO MACHINE WORKS, LTD.

<http://www.sanyo-machine.co.jp/>

Layout Diagram

Management of the Measured Data throughout an Assembly Line



Application to Test & Measurement

- Engine Cold Test (MTB)
- Engine Hot Test
- Function Checker
- Cranking Torque Measurement
- Compression Measurement
- Cylinder Head Measurement
- Fuel Rail Assembly

Usage of the QualityManager

- Automatic Collection of Measured Data
- Practical Use of Numerous Data
- Repetition Test
- Determining Thresholds of the Measurement Devices
- Failure Cause Analysis
- Quality Check of the Parts, by Lot
- Setting the Maintenance Cycle of Measurement Devices

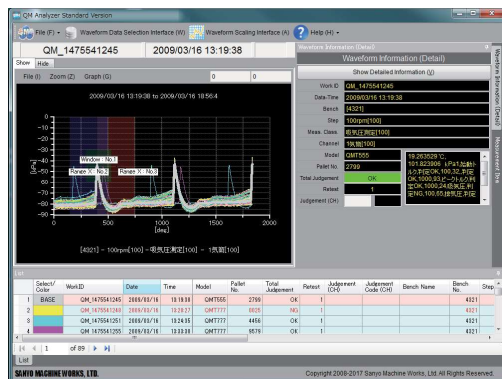
Displaying and Analysis of Graphs

QM Analyzer

Display the Multi Graphs on Multi Windows

Assist Function to Determine the Thresholds

Synchronize the Highlighted Items (Selected Items) among Multi Graphs



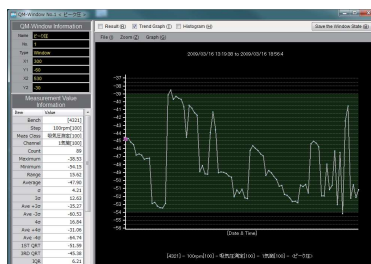
Main Window of QM Analyzer
(Overlapped Waveforms)



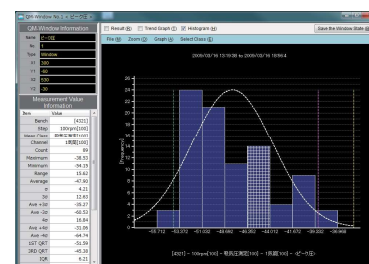
Main Window of QM Analyzer
(Scatter Plot Graph)

A screenshot of a data table listing assessed values. The table has columns for Select, WorkID, Date, Time, Model, Pulse No., Total Judgment, Pattern, Judgment Code (CN), Branch No., and Step. The data rows show various assessment results for different work IDs and models.

List of The Assessed Values

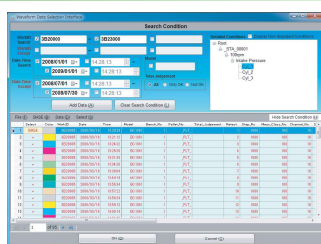


Trend Graph
(Time-wise Change of Assessed Values)



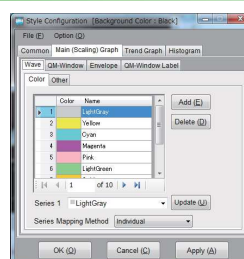
Histogram

Effective and High-Speed Search

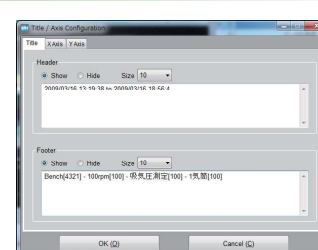


Waveform Data
Selection IF

Customization of "Style"



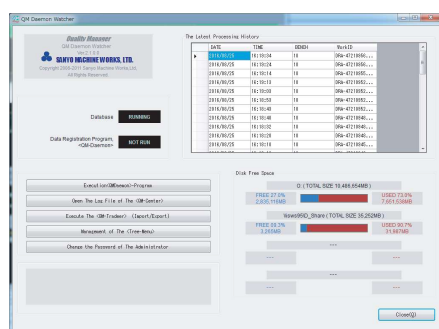
Style Setting



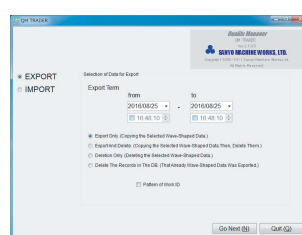
Menu Editor Utility

Collection, Storage, Management of Waveform Data

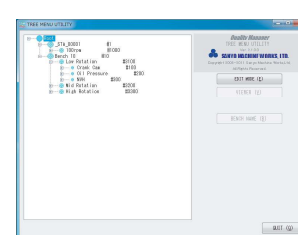
QM Center



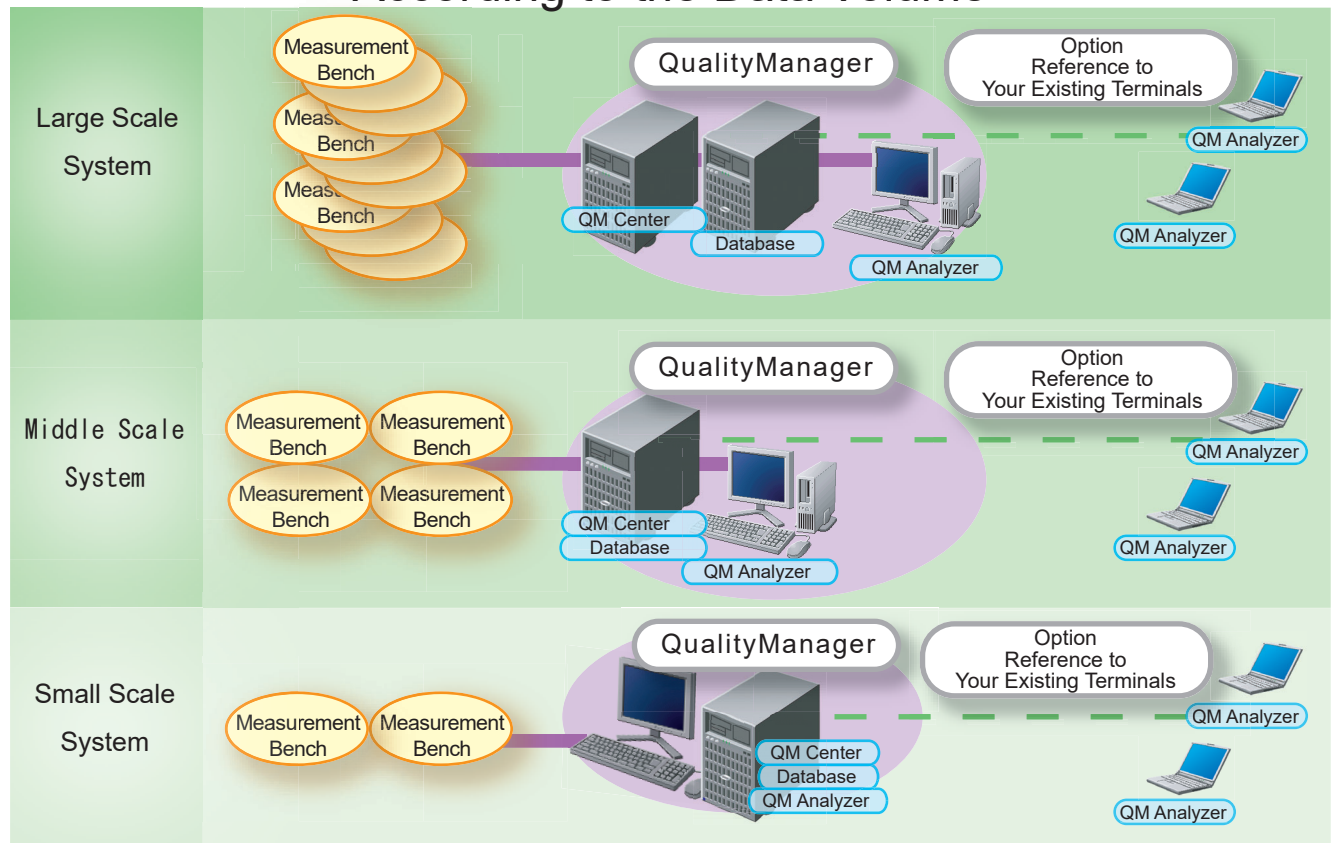
Data Collection



Export / Import
Utility



Optimization of System Configuration According to the Data Volume



SANYO MACHINE WORKS, LTD. **SANYO MACHINE TRADING CO., LTD.**

HEAD OFFICE / PLANT
1 OKA, OKIMURA, KITANAGOYA-SHI, AICHI 481-8540, JAPAN
PHONE +81-568-21-1111
FAX +81-568-23-4711

SALES DEPT.
PHONE +81-568-21-1115
FAX +81-568-25-4295
E-mail west-japan-sales@sanyo-machine.co.jp